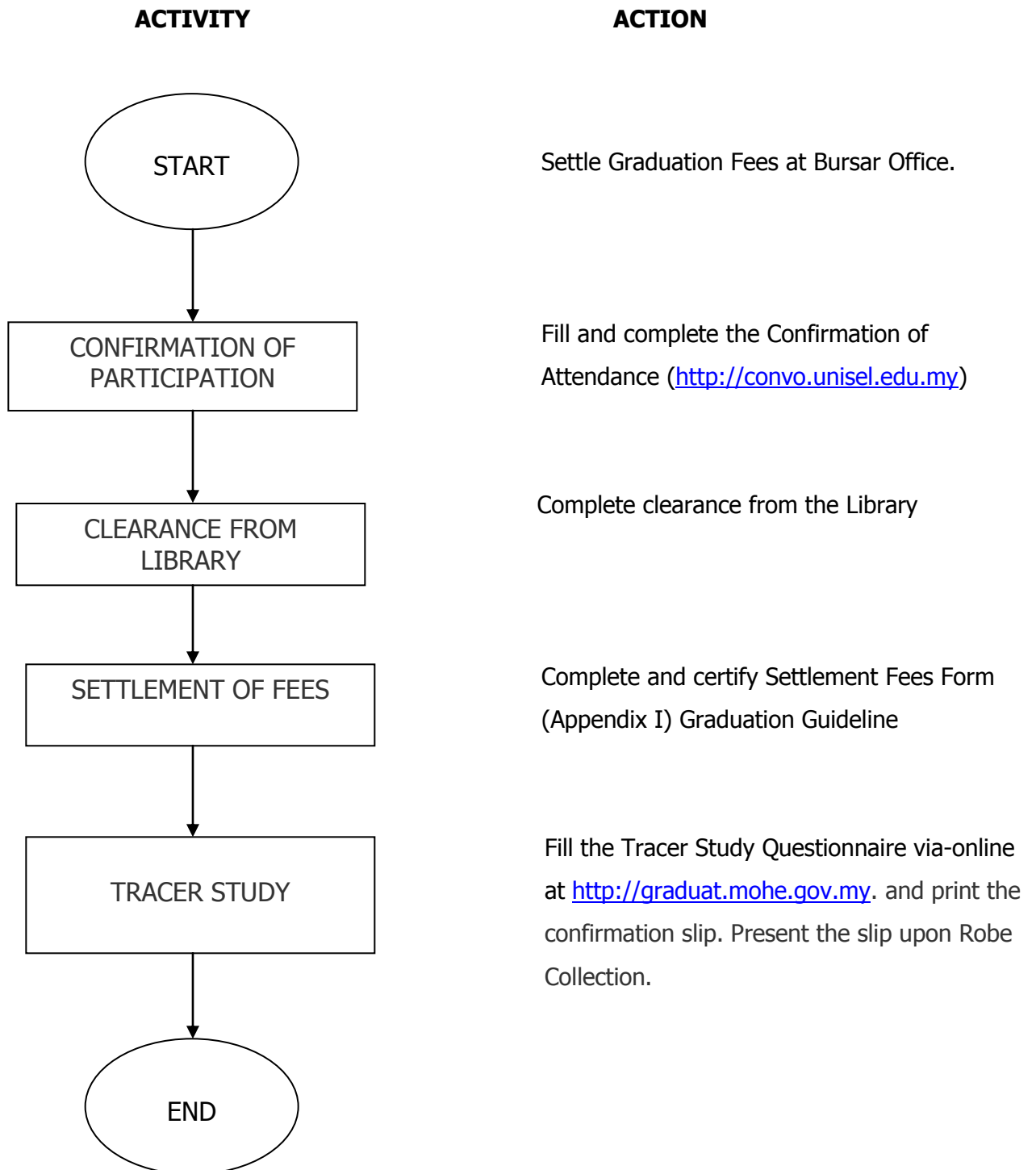
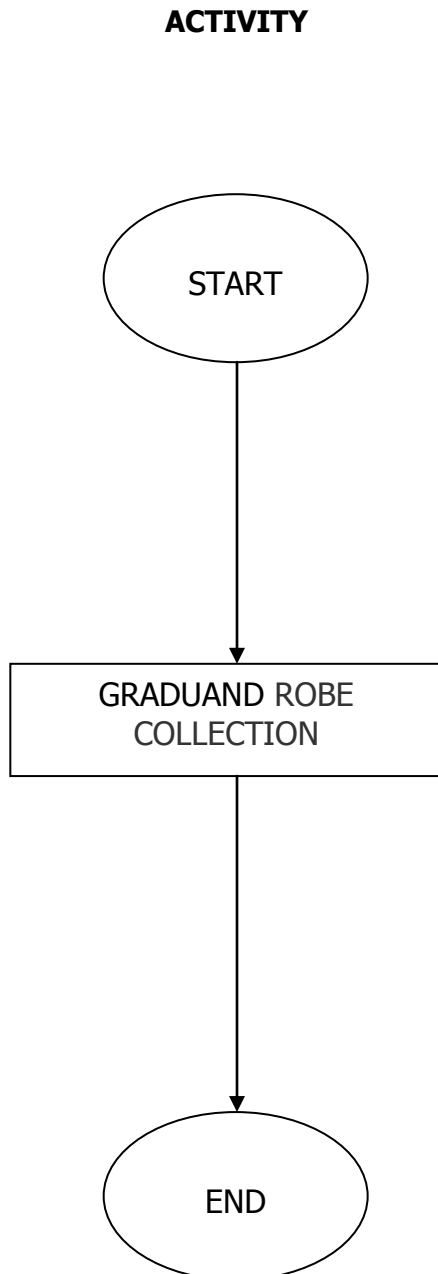


FLOW CHART BEFORE COLLECTION OF GRADUAND ROBE



FLOW CHART OF COLLECTION OF GRADUAND ROBE



ACTION

Documents need to be presented during Collection of Graduand Robe:

- i. Settlement Fees Form
- ii. Library Clearance Form
- iii. Tracer Study – Confirmation Slip
- iv. Collection of Graduand Robe Form

Reminder to all Graduates

Please check and make sure that you have received the robe in good condition, and received the colour of hood and mortarboard according to your faculty's colour (refer to the notice board at the graduand robe collection venue). Be sure that you have taken your invitation cards and car sticker before leaving the university compound. UNISEL will not be responsible of any faulty that occurs later and you will be responsible of your own carelessness.

Graduates are strictly advised not to damage, alter or cut the robe. Fine will be imposed for damages.

FLOW CHART OF RETURNING OF GRADUAND ROBE

